

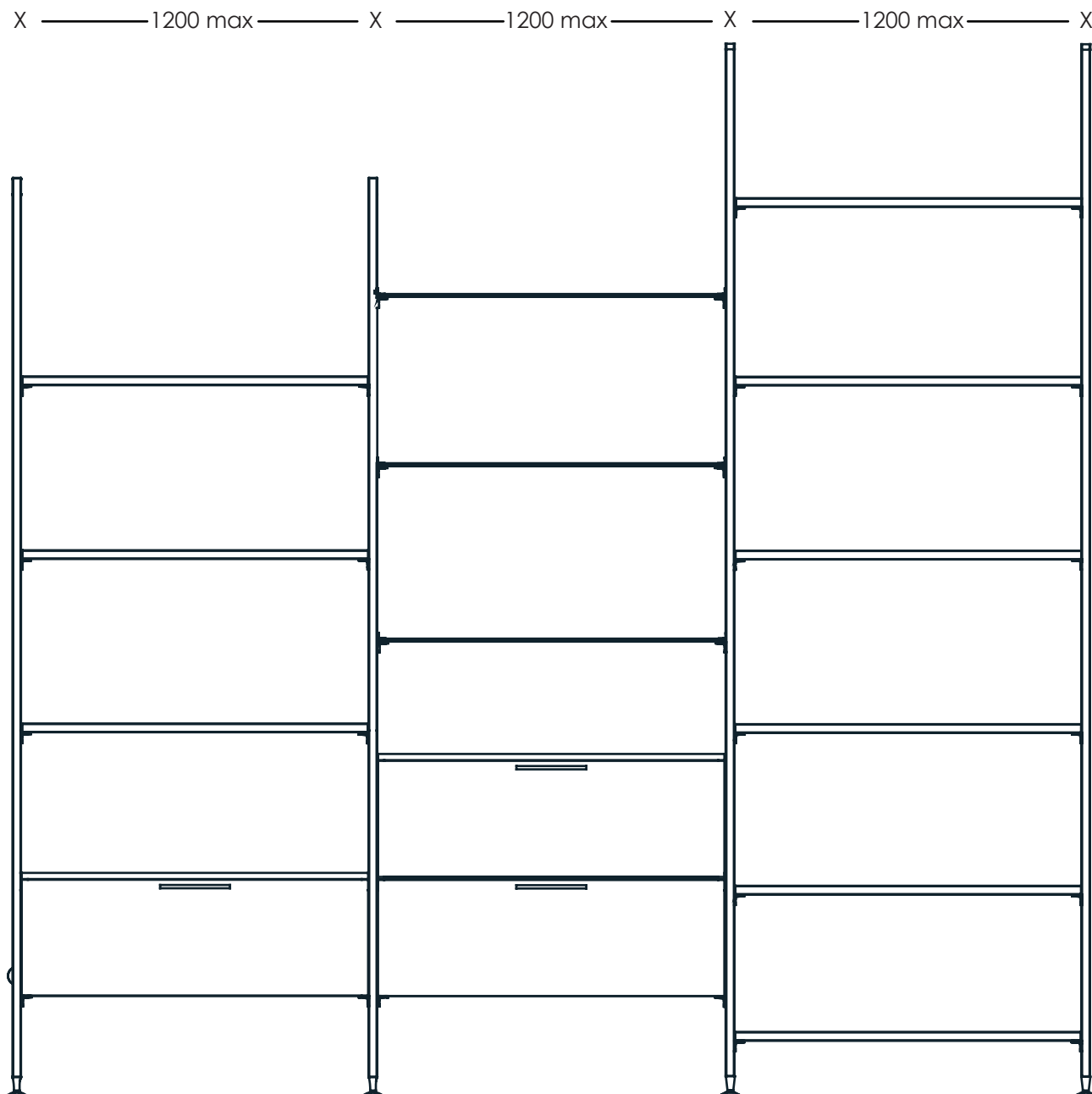




Caratteristiche tecniche Vertical

Vertical technical features

ingombri dimensions



Le composizioni Vertical sono fornite in due standard di altezza. Una per la variante "a muro" una per quella a "soffitto".

Possono essere inoltre personalizzate nella larghezza per un massimo di 1200 mm.

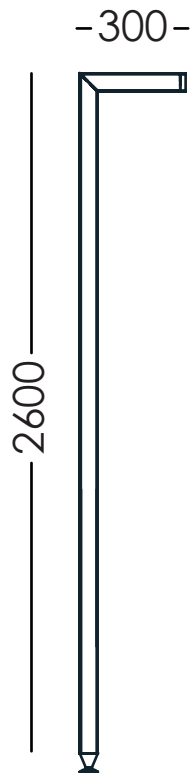
I piedini regolabili permettono aggiustaggi in fase di installazione per un corretto montaggio anche su fondi non perfettamente planari.

The Vertical compositions are supplied in two height standard. One for the "wall" variant, one for the "ceiling" variant.

They can also be customized in the width for maximum of 1200 mm.

The adjustable feet allow a proper setting during installation for correct assembly even on surfaces that are not perfectly flat.

configurazioni layout



La composizione a muro consente di installare mensole fino ad una lunghezza massima di 1200mm, l'altezza standard è 2600x300, personalizzabile su richiesta.

The wall composition admit the installation of a shelves up 1200mm the standard height is 2600x300, customizable on request.



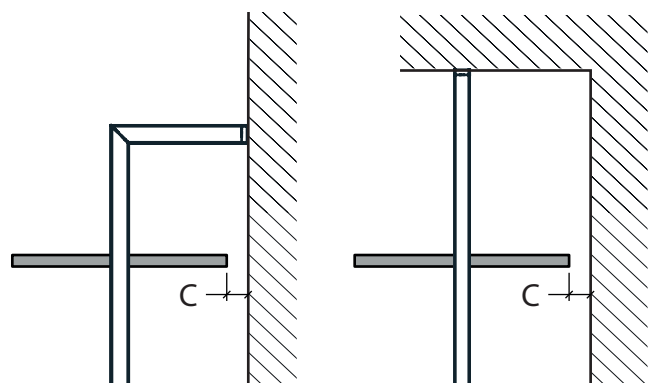
La composizione a soffitto consente di installare mensole fino ad una lunghezza massima di 1200mm l'ancoraggio a soffitto permette di posizionarla anche a centro stanza. L'altezza standard è 3000mm, personalizzabile su richiesta.

The ceiling composition admit the installation of a shelves up 1200mm ceiling fixing admit to position in also in the middle of a space. The standard height is 3000mm, customizable on request.

movimentazione ripiano shelf handling

I montanti con cremagliera necessitano di uno spazio minimo tra i ripiani e la parete, per poterli movimentare senza smontare le staffe. Si consiglia di lasciare almeno 35 mm per rendere l'operazione agevole.

The rack uprights require a minimum space between the shelves and the wall, to be able to move them without dismantling the brackets. It is recommended to leave at least 35 mm to make the operation easier.



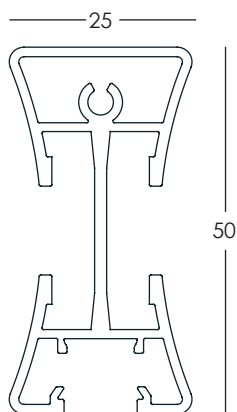
C = 35 mm



KONCA

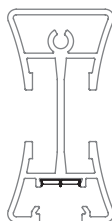
Konca è un sistema a montanti verticali senza cremagliera, gli accessori infatti si bloccano lungo le feritoie ai lati del profilo, mentre nella sua parte posteriore è possibile installare una striscia LED oppure il sistema Magnetic che permette di elettrificare le mensole o dei supporti.

Konca is a system of vertical uprights without rack, the accessories are locked along the slits on the sides of the profile, instead in the back of the profile is possible to install LED stripe or the Minitrak system that allows you to electrify any shelves or other accessories.

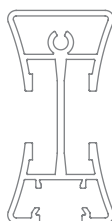


VK01

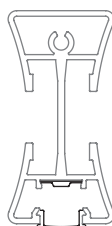
Compatibile con
Compatible with
Magnetic
pg. 252



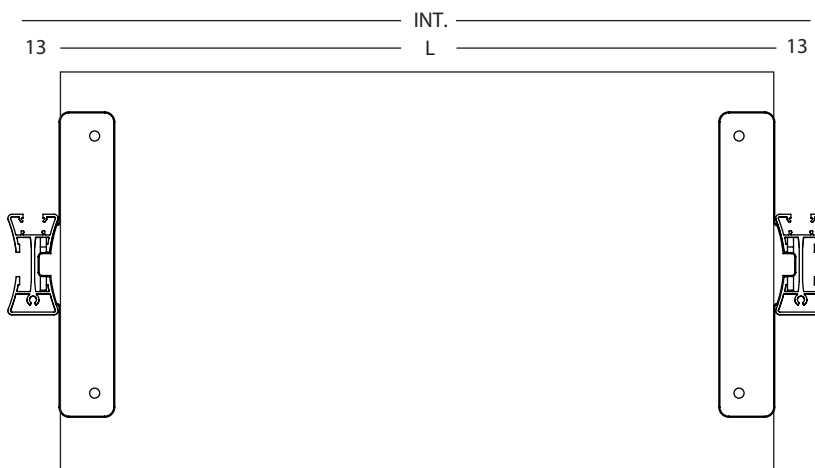
Montante con Magnetic per elettrificazione accessori e ripiani.
Upright with Magnetic for electrification of accessories and shelves.



Montante non elettrificato.
Non electrified upright.



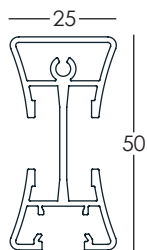
Montante con led e schermo opalino inseriti nella parte posteriore.
Upright with led and opal screen inserted in the back.



$L = INT - (13+13)$
L= LARGHEZZA RIPIANO/SHELF WIDTH

Elementi Elements

VK01.KS30



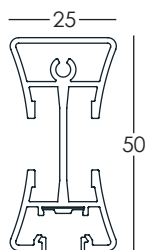
Kit vertical konca pavimento/soffitto

Vertical konca floor/ceiling kit
Non elettrificato/not electrified
In alluminio/Aluminium

* Disponibili altre misure a richiesta
* Other sizes available on request

Art.	descr.	finishing	pz./pcs.
VK01.KS30	3000 mm	AA	1
VK01.KS30	3000 mm	MG	1
VK01.KS30	3000 mm	NB	1

VK01.KS30



Kit vertical konca pavimento/soffitto

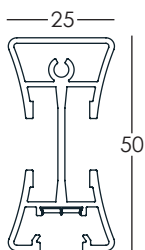
Vertical konca floor/ceiling kit
Elettrificato con LED/electrified with LED
In alluminio/Aluminium

* Disponibili altre misure a richiesta
* Other sizes available on request

   12/24V - max 7A

Art.	descr.	finishing	pz./pcs.
VK01.KS30	3000 mm	AA	1
VK01.KS30	3000 mm	MG	1
VK01.KS30	3000 mm	NB	1

VK01.KS30



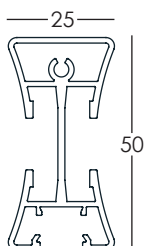
Kit vertical konca pavimento/soffitto
 Vertical konca floor/ceiling kit
 Elettrificato con minitrack/electrified
 with minitrack
 In alluminio/Aluminium

* Disponibili altre misure a richiesta
 * Other sizes available on request

   12/24V - max 7A

Art.	descr.	finishing	pz./pcs.
VK01.KS30	3000 mm	AA	1
VK01.KS30	3000 mm	MG	1
VK01.KS30	3000 mm	NB	1

VK01.KL26



Kit "L" vertical konca pavimento/muro
 "L" Vertical konca floor/wall kit
 Non elettrificato/not electrified
 In alluminio/Aluminium
 Giunto realizzato con taglio a 45°
 Joint made with 45° cut

* Disponibili altre misure a richiesta
 * Other sizes available on request

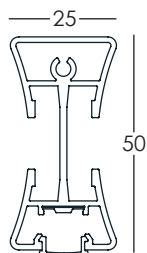


Giunto realizzato con taglio a 45°
 Joint made with 45° cut

Art.	descr.	finishing	pz./pcs.
VK01.KL26	2600x300 mm	AA	1
VK01.KL26	2600x300 mm	MG	1
VK01.KL26	2600x300 mm	NB	1

Elementi Elements

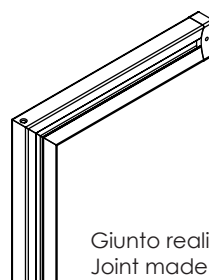
VK01.KL26



Kit "L" vertical konca pavimento/parete

"L" Vertical konca floor/wall kit
 Elettrificato con LED/electrified with LED
 In alluminio/Aluminium
 Giunto realizzato con taglio a 45°
 Joint made with 45° cut

* Disponibili altre misure a richiesta
 * Other sizes available on request

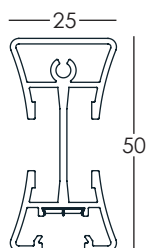


Giunto realizzato con taglio a 45°
 Joint made with 45° cut

   12/24V - max 7A

Art.	descr.	finishing	pz./pcs.
VK01.KL26	2600x300 mm	AA	1
VK01.KL26	2600x300 mm	MG	1
VK01.KL26	2600x300 mm	NB	1

VK01.KL26



Kit "L" vertical konca pavimento/parete

"L" Vertical konca floor/wall kit
 Elettrificato con minitrack/electrified with minitrack
 In alluminio/Aluminium
 Giunto realizzato con taglio a 45°
 Joint made with 45° cut

* Disponibili altre misure a richiesta
 * Other sizes available on request



Giunto realizzato con taglio a 45°
 Joint made with 45° cut

   12/24V - max 7A

Art.	descr.	finishing	pz./pcs.
VK01.KL26	2600x300 mm	AA	1
VK01.KL26	2600x300 mm	MG	1
VK01.KL26	2600x300 mm	NB	1

Accessori Accessories

VK01S.30OP

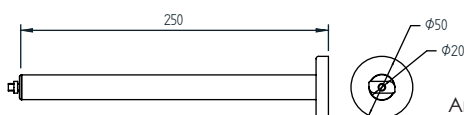
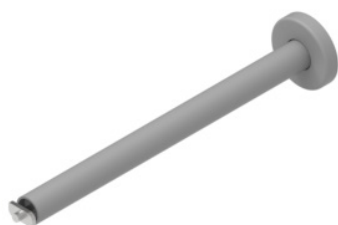


Opalino in policarbonato per montante Konca

Polycarbonate opaline for Konca upright

Art.	descr.	finishing	pz./pcs.
VK01S.30OP	L. 3 mt.	Satinato	1
VK01S.30OPNE	L. 3 mt.	Nero eclisse	1

VK04



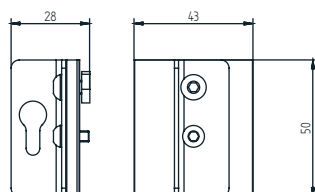
Traverso a muro

Wall spacer

Traverso per fissare il montante a muro
Crossbar to fix the rack to the wall

Art.	descr.	finishing	cp./pairs
VK04.VA	/	VA	1
VK04.MG	/	MG	1
VK04.NB	/	NB	1

VK05



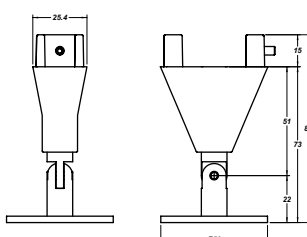
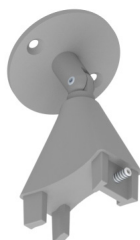
Porta pannello

Panel holder

Gancio per appendere un pannello in verticale
The hook can be used to install a vertical panel

Art.	descr.	finishing	cp./pairs
VK05.VA	/	VA	1
VK05.MG	/	MG	1
VK05.NB	/	NB	1

VK06



Piede superiore con snodo

Upper foot with joint

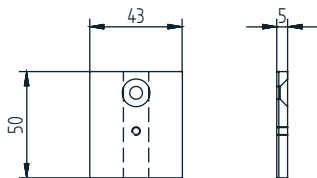
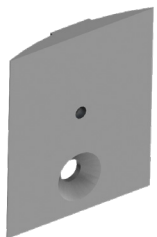
piede per soffitto inclinato
inclined ceiling foot

Art.	descr.	finishing	pz./pcs.
VK06	/	VA-NE-MG	1

Accessori Accessories

VK10

Blocca cassetiera
Drawers lock

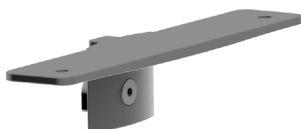


Art.	descr.	finishing	cp./pairs
VK10.AA	/	AA	1
VK10.MG	/	MG	1
VK10.NB	/	NB	1

VK11

Coppia reggimensole
Shelf brackets in pair

Per mensole in legno
For wooden shelf
Utilizzabile con VK10 per montaggio cassetiera
Must be used with VK10 to drawer installation

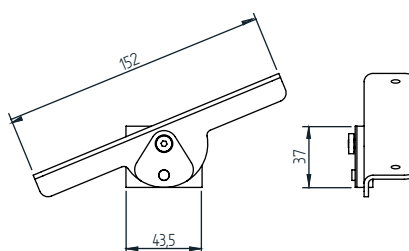
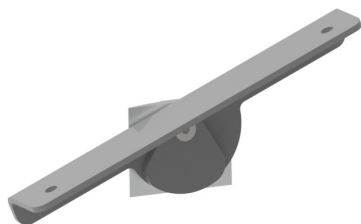


Art.	descr.	finishing	cp./pairs
VK11.VA	/	VA	1
VK11.MG	/	MG	1
VK11.NB	/	NB	1

VK12

Coppia reggimensole ad inclinazione regolabile

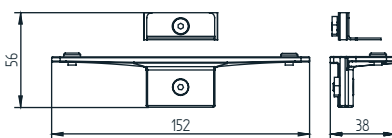
Shelf brackets in pair, adjustable inclination



Art.	descr.	finishing	cp./pairs
VK12.VA	/	VA	1
VK12.MG	/	MG	1
VK12.NB	/	NB	1

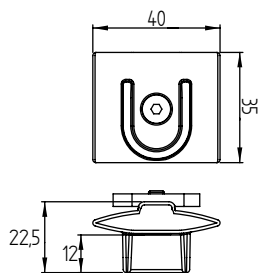
VK13

Coppia reggimensole per vetro
Pair of side shelf holder for glass



Art.	descr.	finishing	cp./pairs
VK13.VA	/	VA	1
VK13.MG	/	MG	1
VK13.NB	/	NB	1

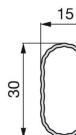
VK14



Coppia reggitubo ovale
Oval pipe holder

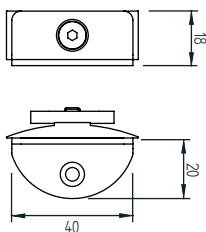
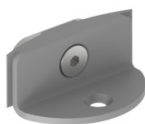
Art.	descr.	finishing	cp./pairs
VK14.VA	/	VA	1
VK14.MG	/	MG	1
VK14.NB	/	NB	1

Tubo ovale
Oval pipe
15x30 mm, thk 0,7 mm



Art.	descr.	finishing	pz./pcs.
E.6220262	3,9 mt	AA-MG	1
E.6220362	2,35 mt	AA	1

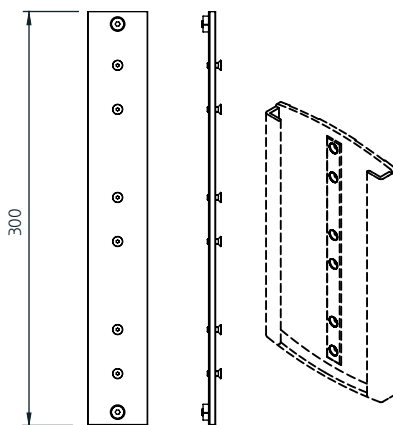
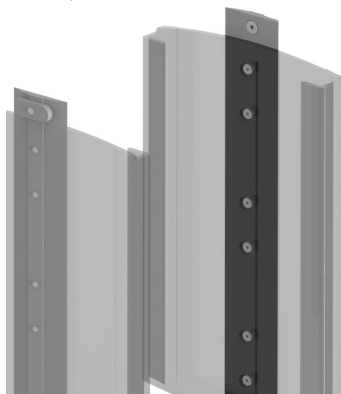
VK15



Coppia supporti blocca cassetiera
Drawer block supports

Art.	descr.	finishing	cp./pairs
VK15.VA	/	VA	1
VK15.MG	/	MG	1
VK15.NB	/	NB	1

VK19

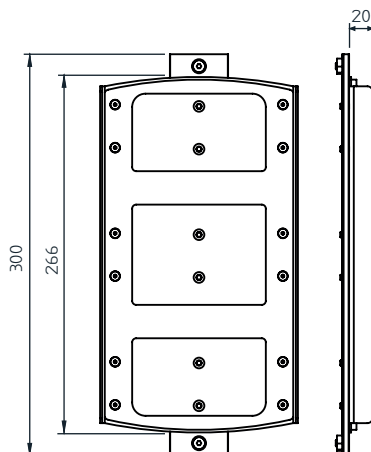
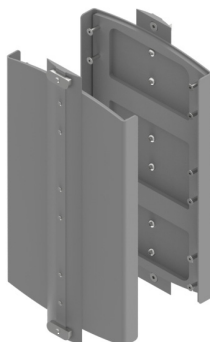


Staffe per coppia supporti fissaggio Servetto 2004
Brackets for pair of Servetto 2004 fixing supports

2x
Non include
Not included

Art.	descr.	finishing	cp./pairs
VK19.VA	/	VA	1
VK19.MG	/	MG	1
VK19.NB	/	NB	1

VK20



Staffe per Servetto 2004
Brackets for Servetto 2004

Art.	descr.	finishing	cp./pairs
VK20.VA	/	VA	1
VK20.MG	/	MG	1
VK20.NB	/	NB	1