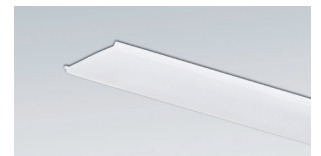
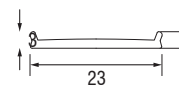
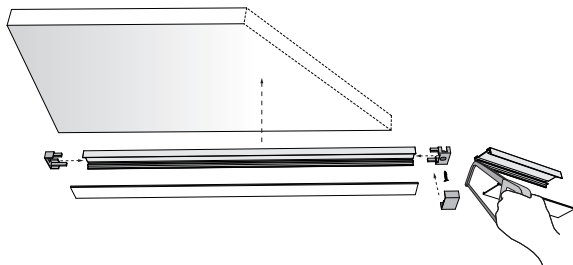
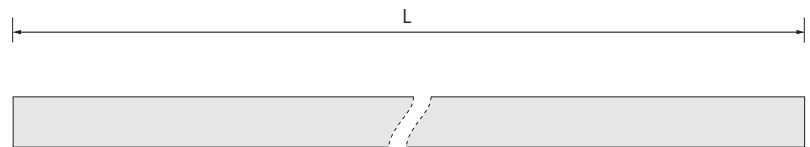
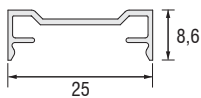
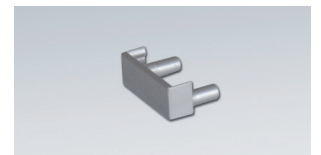
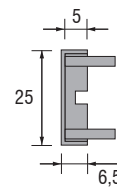


# PRO- NET xT

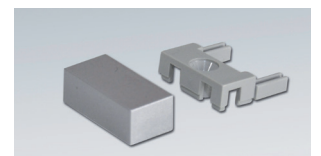
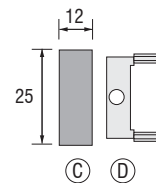
- IT** **Profilo in alluminio per libera installazione** - Tagliabile a misura; si abbina ad uno schermo in policarbonato, anch'esso tagliabile a misura, e a terminali di chiusura (opzionali).
- EN** **Aluminium profile for surface mounting** - Cuttable to size; it combines with a polycarbonate screen, also cuttable to size, and end caps (optional).
- DE** **Alu-Anbauprofil** - Kürzbar und kombinierbar mit einer kürzbaren Polycarbonat-Abdeckung und Endkappen (optional).



(A) Schermo  
Screen / Abdeckung



(B) Terminali  
End covers / Endkappen



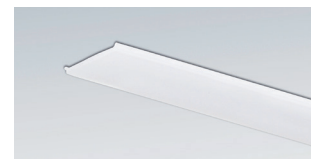
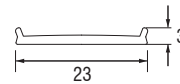
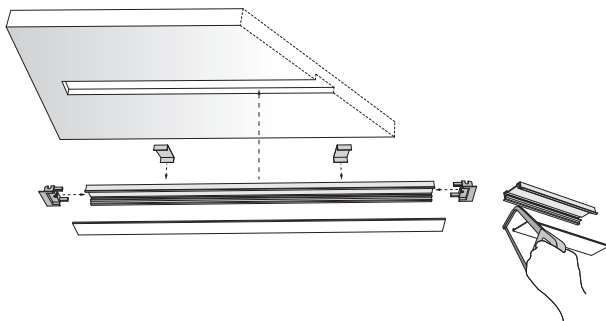
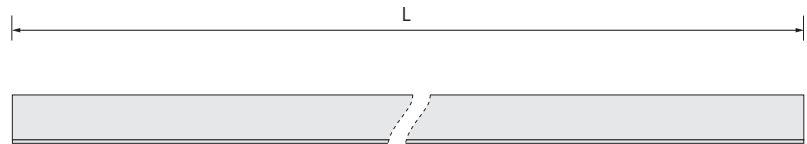
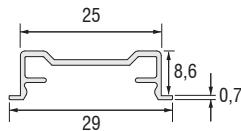
(C) (D) Terminali a vite con coperchio  
Screw fix end cap with cover  
Endkappen mit Schraubbefestigung

Profilo - Profile - Profil	
L	Codice - Part no. - Artikel-Nr.
2000	668P2000S
3000	668P3000S
Schermo - Screen - Abdeckung	
L	Codice - Part no. - Artikel-Nr.
2014	668S2000
3014	668S3000
Terminali - End covers - Endkappen	
PCS	Codice - Part no. - Artikel-Nr.
PAIR	668T02S
1	668C001S
1	668B001

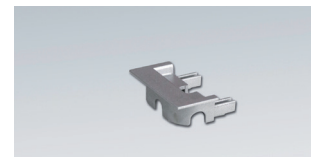
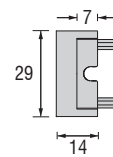
Dimensioni in millimetri (mm) / Dimensions in Millimeters (mm) / Dimensionen in Millimetern (mm)

# PRO- NET

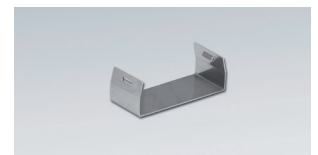
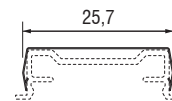
- IT** **Profilo in alluminio ossidato per incasso** - Tagliabile a misura; si abbina ad uno schermo in policarbonato, anch'esso tagliabile a misura, e a terminali di chiusura (opzionali). Per l'installazione è possibile utilizzare clip di ancoraggio (opzionali).
- EN** **Oxidized aluminium profile for flush mounting** - Cuttable to size; it combines with a polycarbonate screen, also cuttable to size, and end caps (optional). Installation by means of fixing clips (optional).
- DE** **Einbauprofil aus eloxiertem Aluminium** - Kürzbar und kombinierbar mit einer kürzbaren Polycarbonat-Abdeckung und Endkappen (optional). Montage mit Befestigungsclips (optional).



Ⓐ Schermo  
Screen / Abdeckung



Ⓑ Terminali  
End covers / Endkappen



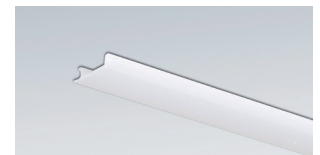
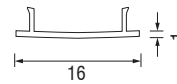
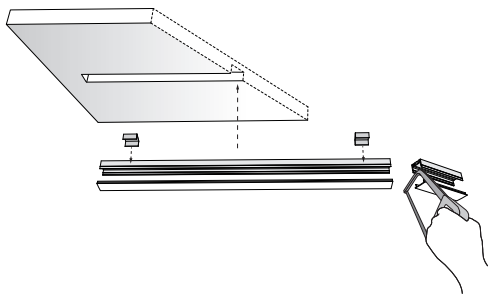
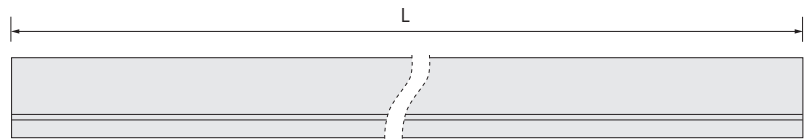
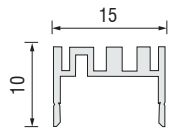
Ⓒ Clip di fissaggio / Fixing clip / Clip

Profilo - Profile - Profil	
L	Codice - Part no. - Artikel-Nr.
2000	668PI2000S
3000	668PI3000S
Schermo - Screen - Abdeckung	
L	Codice - Part no. - Artikel-Nr.
2014	668S2000
3014	668S3000
Terminali - End covers - Endkappen	
PCS	Codice - Part no. - Artikel-Nr.
PAIR	668TI02S
Clip di ancoraggio - Fixing clip - Clip	
PCS	Codice - Part no. - Artikel-Nr.
1	668M001

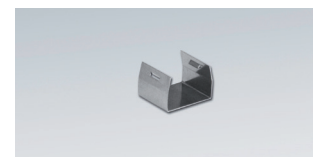
Dimensioni in millimetri (mm) / Dimensions in Millimeters (mm) / Dimensionen in Millimetern (mm)

# PRO- microGEO

- IT Profilo in alluminio per incasso** - Tagliabile a misura; si abbina ad uno schermo in policarbonato, anch'esso tagliabile a misura. Per l'installazione utilizzare le clip di fissaggio (indicativamente ogni 300mm).
- EN Aluminium profile for flush mounting** - Cuttable to size; it combines with a polycarbonate screen, also cuttable to size. Installation by means of fixing clips (intervals of 300mm).
- DE Alu-Einbauprofil** - Kürzbar und kombinierbar mit einer kürzbaren Polycarbonat-Abdeckung. Montage mit Befestigungsclips (Abstand 300mm).



(A) Schermo  
Screen / Abdeckung



(B) Clip di ancoraggio  
Fixing clip / Befestigungsclip

Profilo - Profile - Profil	
L	Codice - Part no. - Artikel-Nr.
2000	675MP2000
3000	675MP3000
Schermo - Screen - Abdeckung	
L	Codice - Part no. - Artikel-Nr.
2014	675MS2000
3014	675MS3000
Clip di ancoraggio - Fixing clip - Clip	
PCS	Codice - Part no. - Artikel-Nr.
B	675M001

Dimensioni in millimetri (mm) / Dimensions in Millimeters (mm) / Dimensionen in Millimetern (mm)